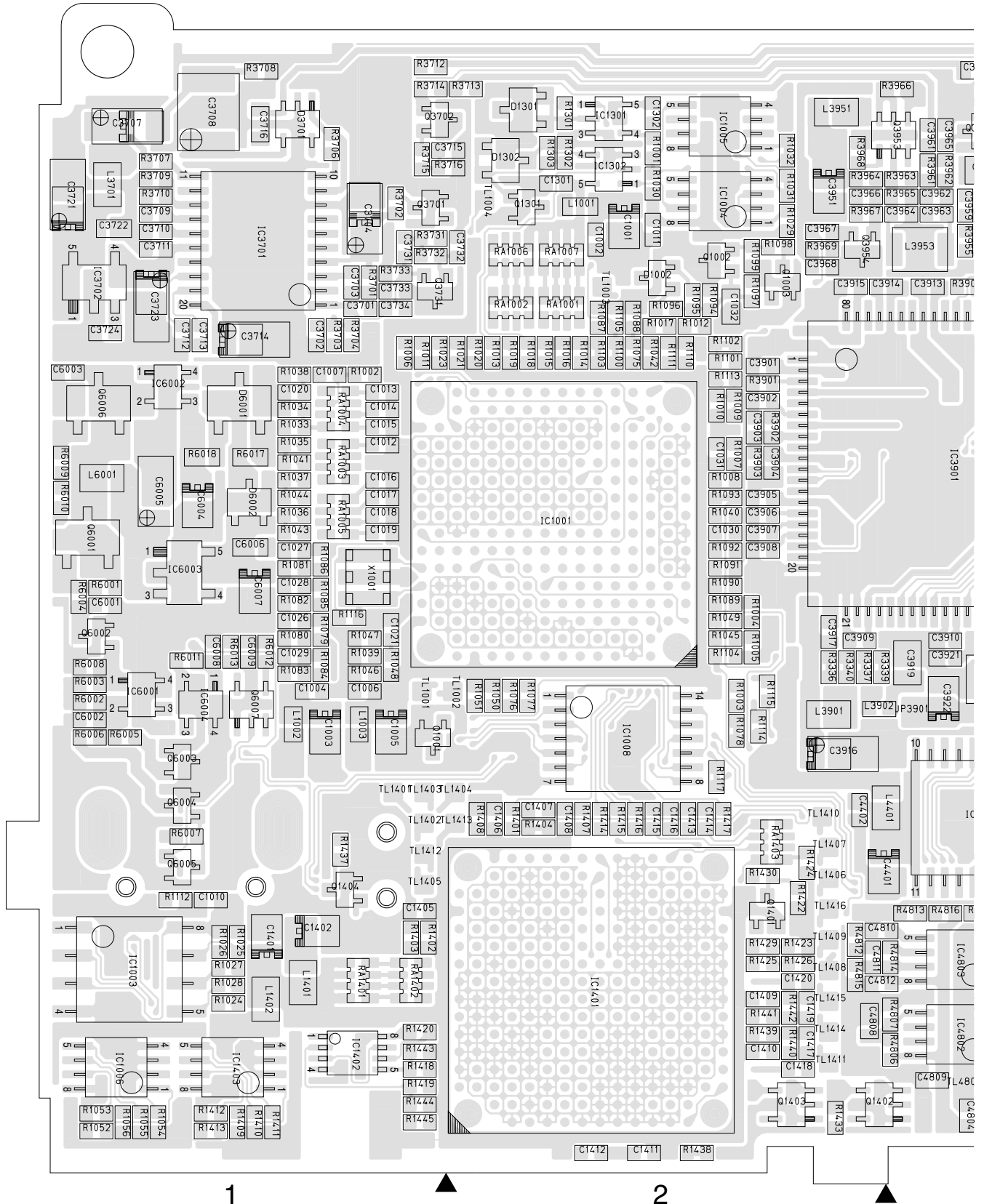


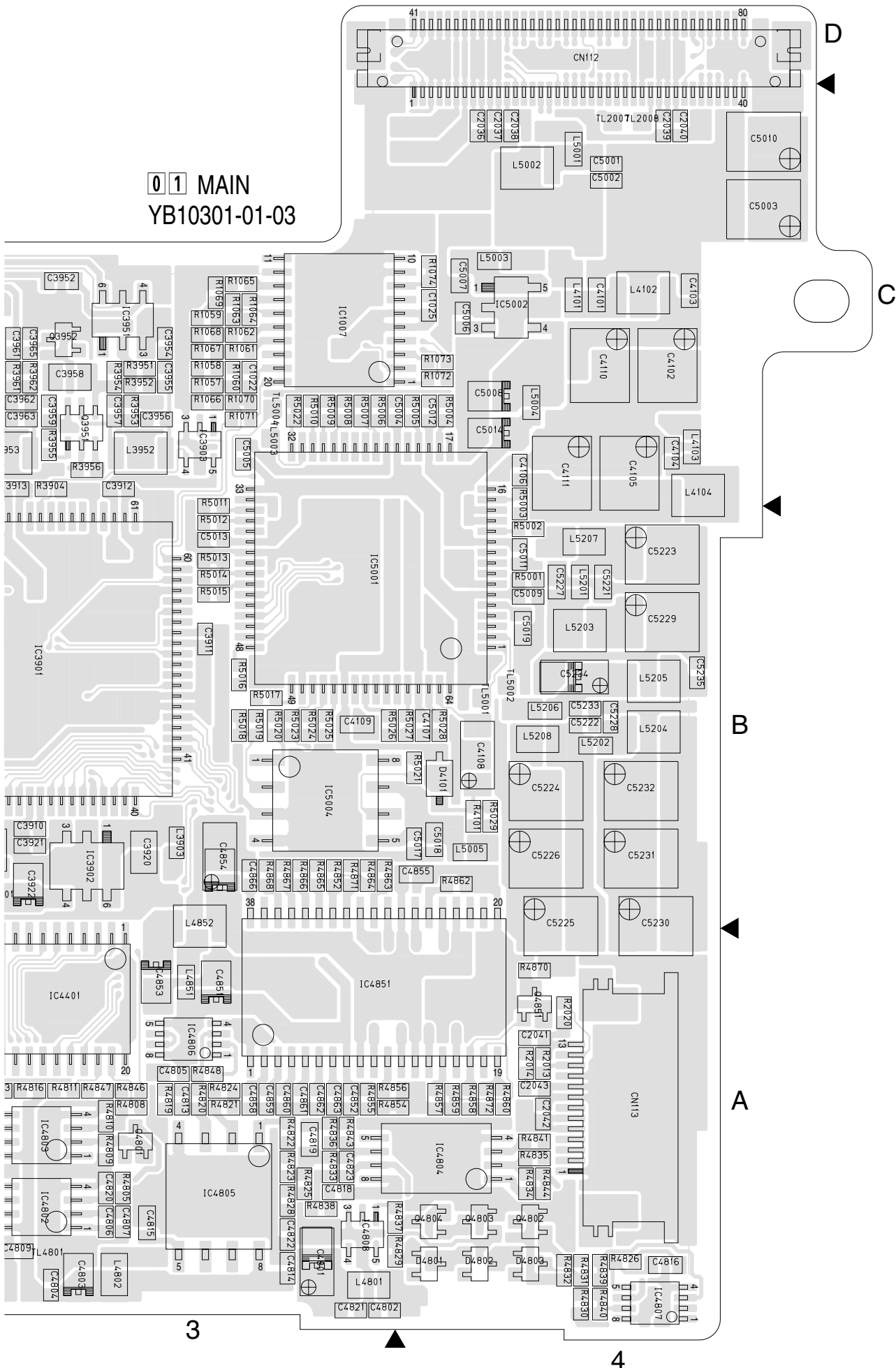
SECTION 4
CHARTS AND DIAGRAM

4.1 MAIN CIRCUIT BOARD

FOIL SIDE(B)



01 MAIN
YB10301-01-03

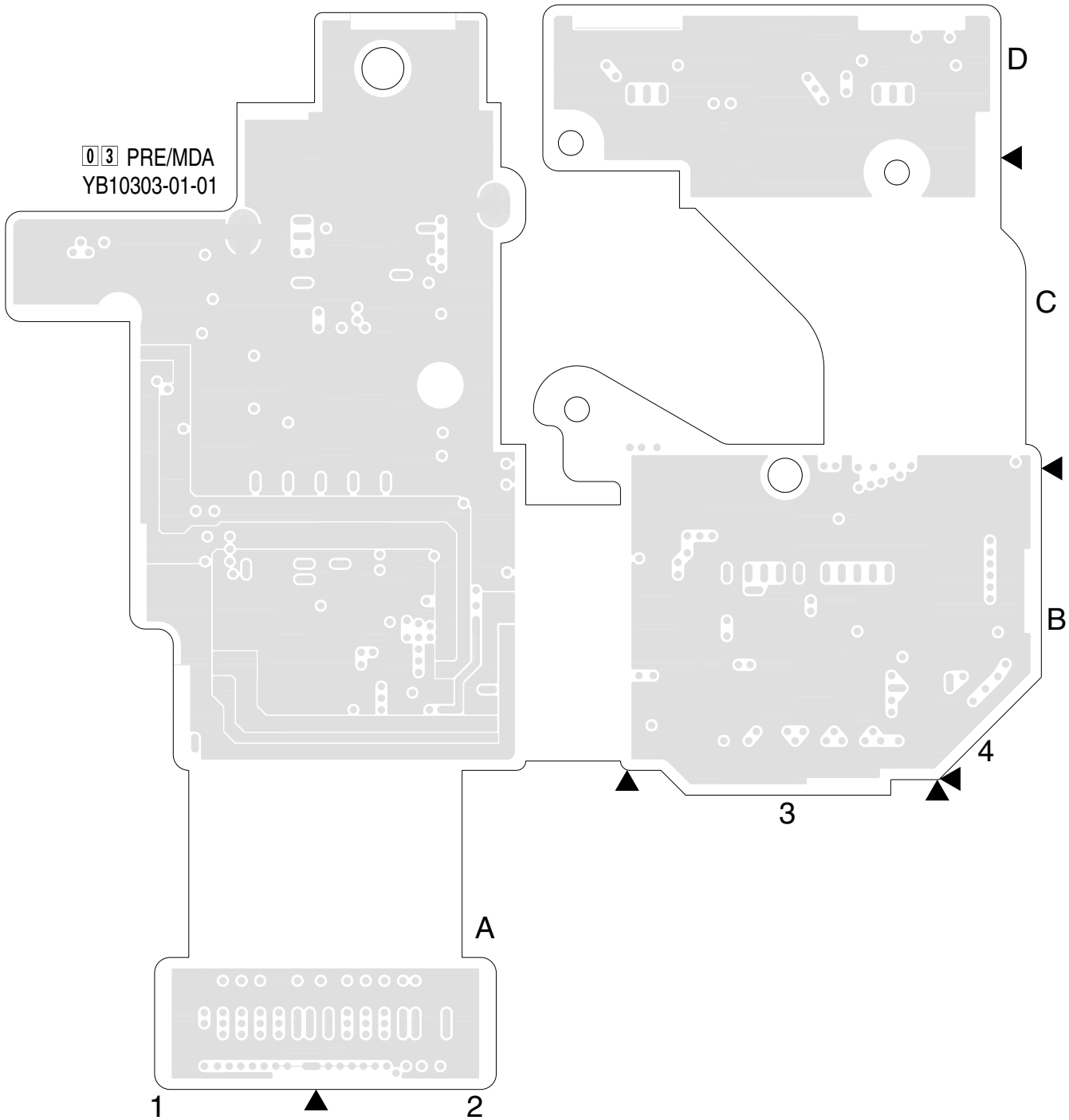


COMPONENT PARTS LOCATION GUIDE < MAIN >

REF.NO.	LOCATION	REF.NO.	LOCATION	REF.NO.	LOCATION	REF.NO.	LOCATION	REF.NO.	LOCATION	REF.NO.	LOCATION	REF.NO.	LOCATION
CAPACITOR													
C1001	B C 2C	C2039	B C 4C	C3913	B C 3C	C4364	A C 3C	C5231	B C 4B	IC5004	B C 3B	Q4801	B C 3A
C1002	B C 2C	C2040	B C 4C	C3914	B C 3C	C4365	A C 3C	C5232	B C 4B	IC6001	B C 1B	Q4802	B C 4A
C1003	B C 1B	C2041	B C 4A	C3915	B C 2C	C4368	A C 3C	C5233	B C 4B	IC6002	B C 1B	Q4803	B C 4A
C1004	B C 1B	C2042	B C 4A	C3916	B C 2A	C4369	A C 3B	C5234	B C 4B	IC6003	B C 1B	Q4804	B C 4A
C1005	B C 1B	C2043	B C 4A	C3917	B C 2B	C4370	A C 3B	C5235	B C 4B	IC6004	B C 1B	Q4851	B C 4A
C1006	B C 1B	C3002	A C 2B	C3919	B C 3B	C4401	B C 2A	C6001	B C 1B	COIL			
C1007	B C 1B	C3005	A C 2B	C3920	B C 3B	C4402	B C 2A	C6002	B C 1B	L1001	B C 2B	Q4901	A C 3A
C1008	A C 2B	C3006	A C 2B	C3921	B C 3B	C4801	B C 3A	C6003	B C 1B	L1002	B C 1B	Q6001	B C 1B
C1009	A C 2C	C3008	A C 2B	C3922	B C 3B	C4802	B C 3A	C6004	B C 1B	L1003	B C 1B	Q6002	B C 1B
C1010	B C 1A	C3009	A C 2B	C3951	B C 2C	C4803	B C 3A	C6005	B C 1B	L1004	A C 3C	Q6003	B C 1A
C1011	B C 2C	C3010	A C 2B	C3952	B C 3C	C4804	B C 3A	C6006	B C 1B	L1201	A C 4C	Q6004	B C 1A
C1012	B C 1B	C3012	A C 3B	C3954	B C 3C	C4805	B C 3A	C6007	B C 1B	L1401	B C 1A	Q6005	B C 1A
C1013	B C 1B	C3014	A C 3B	C3955	B C 3C	C4806	B C 3A	C6008	B C 1B	L1402	B C 1A	Q6006	B C 1B
C1014	B C 1B	C3015	A C 3B	C3956	B C 3C	C4807	B C 3A	C6009	B C 1B	L2001	A C 3C	Q6007	B C 1B
C1015	B C 1B	C3016	A C 2B	C3957	B C 3C	C4808	B C 2A	CONNECTOR				R1	A C 4C
C1016	B C 1B	C3017	A C 1B	C3958	B C 3C	C4809	B C 3A	CN101	A C 4C	L3001	A C 1B	R2	A C 4C
C1017	B C 1B	C3018	A C 2B	C3959	B C 3C	C4810	B C 2A	CN102	A C 4B	L3002	A C 2A	R3	A C 4C
C1018	B C 1B	C3020	A C 2B	C3962	B C 3C	C4811	B C 2A	CN103	A C 4B	L3003	A C 2A	R4	A C 4C
C1019	B C 1B	C3021	A C 2B	C3963	B C 3C	C4812	B C 2A	CN104	A C 4A	L3004	A C 1B	R5	A C 4C
C1020	B C 1B	C3022	A C 3A	C3964	B C 3C	C4813	B C 3A	CN105	A C 4A	L3005	A C 2C	R1001	B C 2C
C1021	B C 1B	C3023	A C 3A	C3965	B C 3C	C4814	B C 3A	CN106	A C 2A	L3006	A C 2B	R1002	B C 1B
C1022	B C 3C	C3024	A C 3B	C3966	B C 2C	C4815	B C 3A	CN107	A C 1A	L3009	A C 3B	R1003	B C 2B
C1023	A C 3C	C3025	A C 3B	C3967	B C 2C	C4816	B C 4A	CN108	A C 1B	L3305	A C 2A	R1004	B C 2B
C1024	A C 3C	C3026	A C 2A	C3968	B C 2C	C4817	B C 3A	CN109	A C 1B	L3307	A C 1B	R1005	B C 2B
C1025	B C 4C	C3027	A C 2A	C4101	B C 4C	C4818	B C 3A	CN110	A C 3C	L3308	A C 1A	R1006	B C 1B
C1026	B C 1B	C3028	A C 2A	C4102	B C 4C	C4819	B C 3A	CN111	A C 1C	L3312	A C 3A	R1007	B C 2B
C1027	B C 1B	C3029	A C 2A	C4103	B C 4C	C4821	B C 3A	CN112	B C 4C	L3313	A C 3A	R1008	B C 2B
C1028	B C 1B	C3030	A C 2A	C4104	B C 4C	C4822	B C 3A	CN113	B C 4A	L3701	B C 1C	R1009	B C 2B
C1029	B C 1B	C3031	A C 2A	C4105	B C 4C	C4823	B C 3A	DIODE				R1010	B C 2B
C1030	B C 2B	C3032	A C 2B	C4106	B C 4C	C4824	B C 3A	D1002	B C 2C	L3901	B C 2B	R1011	B C 1B
C1031	B C 2B	C3033	A C 2B	C4107	B C 4B	C4825	B C 3A	D1201	A C 4C	L3902	B C 3B	R1012	B C 2B
C1032	B C 2B	C3034	A C 2B	C4108	B C 4B	C4852	B C 3A	D1301	B C 2C	L3952	B C 3C	R1013	B C 2B
C1201	A C 4D	C3035	A C 2C	C4109	B C 3B	C4853	B C 3A	D1302	B C 2C	L3953	B C 3C	R1014	B C 2B
C1202	A C 4C	C3036	A C 2A	C4110	B C 4C	C4854	B C 3A	D2001	A C 1C	L4101	B C 4C	R1015	B C 2B
C1203	A C 4D	C3037	A C 2A	C4111	B C 4C	C4855	B C 3A	D2002	A C 1C	L4102	B C 4C	R1016	B C 2B
C1204	A C 4C	C3038	A C 1B	C4201	A C 3D	C4856	B C 3A	D2003	A C 1C	L4103	B C 4C	R1017	B C 2B
C1301	A C 2C	C3039	A C 1B	C4202	A C 4D	C4860	B C 3A	D2004	A C 1C	L4104	B C 4C	R1018	B C 2B
C1302	B C 2C	C3040	A C 1B	C4203	A C 4C	C4861	B C 3A	D2005	A C 4C	L4201	A C 4C	R1019	B C 2B
C1401	B C 1A	C3041	A C 1B	C4204	A C 4C	C4862	B C 3A	D3002	A C 3B	L4202	A C 4C	R1020	B C 2B
C1402	B C 1A	C3042	A C 2A	C4205	A C 4C	C4863	B C 3A	D3301	A C 3A	L4203	A C 4C	R1021	B C 2B
C1405	B C 1A	C3043	A C 2A	C4206	A C 4C	C4864	A C 4A	D3302	A C 3A	L4204	A C 4C	R1022	B C 1B
C1406	B C 2A	C3044	A C 2B	C4207	A C 4C	C4865	B C 3B	D3701	B C 1C	L4301	A C 4B	R1023	B C 2B
C1407	B C 2A	C3045	A C 2B	C4208	A C 4C	C4901	A C 3A	D4101	B C 4B	L4302	A C 4B	R1024	B C 1A
C1408	B C 2A	C3046	A C 2C	C4209	A C 4C	C4902	A C 3A	D4201	A C 4C	L4303	A C 4B	R1025	B C 1A
C1409	B C 2A	C3047	A C 2B	C4210	A C 4C	C4903	A C 4A	D4801	B C 4A	L4305	A C 4B	R1026	B C 1A
C1410	B C 2A	C3048	A C 2B	C4211	A C 4C	C4904	A C 4A	D4802	B C 4A	L4306	A C 4B	R1027	B C 1A
C1411	B C 2A	C3052	A C 2B	C4212	A C 4C	C4905	A C 4A	D4803	B C 4A	L4307	A C 3B	R1028	B C 1A
C1412	B C 2A	C3053	A C 3B	C4213	A C 4C	C4906	A C 3A	D6001	B C 1B	L4308	A C 4C	R1029	B C 2C
C1413	B C 2A	C3318	A C 2B	C4214	A C 4C	C4907	A C 4A	D6002	B C 1B	L4351	A C 3C	R1030	B C 2C
C1414	B C 2A	C3319	A C 2B	C4215	A C 4C	C4908	A C 4A	IC				R1031	B C 2C
C1415	B C 2A	C3320	A C 2B	C4216	A C 4C	C4909	A C 3A	IC1001	B C 2B	L4401	B C 3A	R1032	B C 2C
C1416	B C 2A	C3325	A C 2B	C4217	A C 4C	C4910	A C 3A	IC1002	A C 2C	L4801	B C 3A	R1033	B C 1B
C1417	B C 2A	C3326	A C 2B	C4218	A C 4B	C4911	A C 3A	IC1003	B C 1A	L4851	B C 3A	R1034	B C 1B
C1418	B C 2A	C3328	A C 3A	C4219	A C 4B	C4912	A C 3A	IC1004	B C 2C	L4852	B C 3B	R1035	B C 1B
C1419	B C 2A	C3329	A C 3A	C4220	A C 4B	C4913	A C 3A	IC1005	B C 2C	L4853	A C 4A	R1036	B C 1B
C1420	B C 2A	C3330	A C 2B	C4221	A C 4C	C4914	A C 3A	IC1006	B C 2C	L4901	A C 3A	R1037	B C 1B
C2003	A C 4B	C3331	A C 3A	C4222	A C 4C	C4915	A C 3A	IC1007	B C 3C	L4902	A C 4A	R1038	B C 1B
C2004	A C 4A	C3332	A C 3A	C4223	A C 4C	C4916	A C 3A	IC1008	B C 2B	L5001	B C 4C	R1039	B C 1B
C2005	A C 4A	C3701	B C 1B	C4224	A C 4C	C4917	A C 3A	IC1009	B C 2B	L5002	B C 4C	R1040	B C 2B
C2006	A C 4A	C3702	B C 1B	C4225	A C 4C	C4918	A C 3A	IC1201	A C 4D	L5003	B C 4C	R1041	B C 1B
C2007	A C 2A	C3703	B C 1C	C4226	A C 4C	C4919	A C 3A	IC1301	B C 2C	L5004	B C 4C	R1042	B C 2B
C2008	A C 2A	C3704	B C 1C	C4301	A C 4B	C4920	A C 3A	IC1302	B C 2C	L5005	B C 4B	R1043	B C 1B
C2009	A C 2A	C3707	B C 1C	C4302	A C 4B	C4921	A C 4B	IC1401	B C 2A	L5201	B C 4B	R1044	B C 1B
C2010	A C 2A	C3708	B C 1C	C4303	A C 4B	C4922	A C 3A	IC1402	B C 1A	L5202	B C 4B	R1045	B C 2B
C2011	A C 2A	C3709	B C 1C	C4304	A C 4B	C4923	A C 4A	IC1403	B C 1A	L5203	B C 4B	R1046	B C 1B
C2012	A C 1B	C3710	B C 1C	C4306	A C 2B	C5001	B C 4C	IC3001	A C 2B	L5204	B C 4B	R1047	B C 1B
C2013	A C 2B	C3711	B C 1C	C4307	A C 4B	C5002	B C 4C	IC3002	A C 2B	L5205	B C 4B	R1048	B C 1B
C2014	A C 1B	C3712	B C 1B	C4308	A C 4B	C5003	B C 4C	IC3302	A C 2B	L5206	B C 4B	R1049	B C 2B
C2015	A C 1B	C3713	B C 1B	C4309	A C 3B	C5004	B C 4C	IC3701	B C 1C	L5207	B C 4B	R1050	B C 2B
C2016	A C 1B	C3714	B C 1B	C4310	A C 4B	C5005	B C 3C	IC3702	B C 1C	L5208	B C 4B	R1051	B C 2B
C2017	A C 1B	C3715	B C 2C	C4311	A C 3B	C5006	B C 4C	IC3901	B C 3B	L6001	B C 1B	R1052	B C 1A
C2018	A C 1B	C3716	B C 1C	C4312	A C 4B	C5007	B C 4C	IC3902	B C 3B	TRANSISTOR			
C2019	A C 1B	C3721	B C 1C	C4313	A C 3B	C5008	B C 4C	IC3903	B C 3C	Q1001	B C 1B	R1054	B C 1A
C2020	A C 1B	C3722	B C 1C	C4315	A C 3B	C5009	B C 4B	IC3951	B C 3C	Q1002	B C 2C	R1055	B C 1A
C2021	A C 1B	C3723	B C 1B	C4316	A C 3B	C5010	B C 4C	IC4201	A C 4D	Q1003	B C 2C	R1056	B C 1A
C2022	A C 1B	C3724	B C 1B	C4317	A C 3B	C5011	B C 4B	IC4202	A C 4D	Q1301	B C 2C	R1057	B C 3C
C2023	A C 1B	C3731	B C 1C	C4318	A C 4B	C5012	B C 4C	IC4301	A C 3B	Q1401	B C 2A	R1058	B C 3C
C2024	A C 1B	C3732	B C 2C	C4319	A C 3B	C5013	B C 3B	IC4302	A C 4B	Q1402	B C 2A	R1059	B C 3C
C2025	A C 1B	C3733	B C 1C	C4320	A C 3B	C5014	B C 4C	IC4401	B C 3A	Q1403	B C 2A	R1060	B C 3C
C2026	A C 1B	C3734	B C 1B	C4321	A C 4B	C5017	B C 4B	IC4802	B C 3A	Q1404	B C 1A	R1061	B C 3C
C2027	A C 1B	C3901	B C 2B	C4322	A C 3B	C5018	B C 4B	IC4803	B C 3A	Q2001	A C 4B	R1062	B C 3C
C2028	A C 1C	C3902	B C 2B	C4323	A C 4C	C5019	B C 4B	IC4804	B C 4A	Q2002	A C 4B	R1063	B C 3C
C2029	A C 1C	C3903	B C 2B	C4351	A C 3B	C5221	B C 4B	IC4805	B C 3A	Q3701	B C 1C	R1064	B C 3C

4.2 PRE/MDA CIRCUIT BOARD

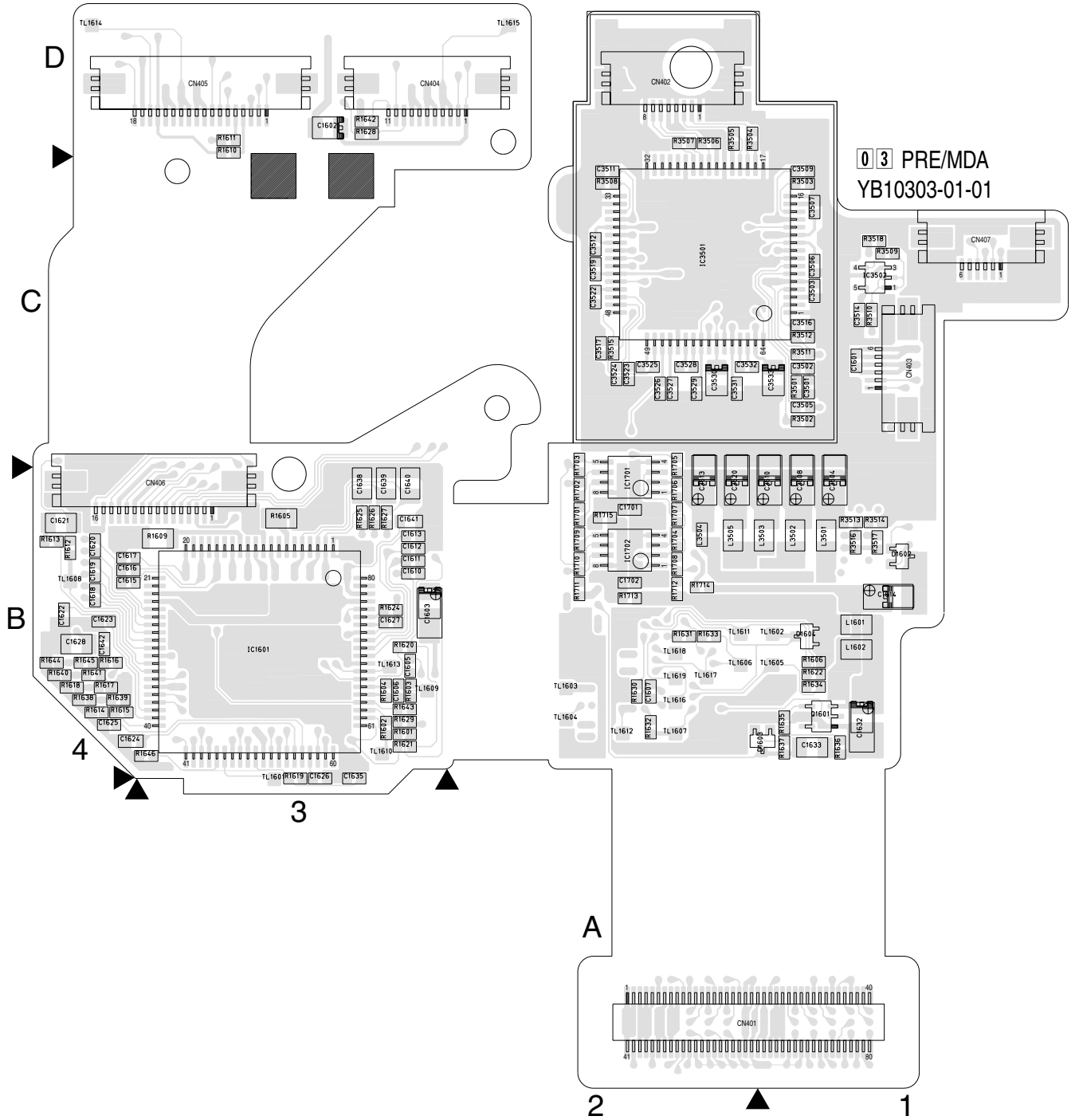
FOIL SIDE(B)



COMPONENT PARTS LOCATION GUIDE <PRE/MDA>

REF.NO.	LOCATION	REF.NO.	LOCATION	REF.NO.	LOCATION	REF.NO.	LOCATION	REF.NO.	LOCATION	REF.NO.	LOCATION	REF.NO.	LOCATION	REF.NO.	LOCATION	
CAPACITOR												RESISTOR		R1615		
C1601	A C 1C	C1616	A C 4B	C1633	A C 1B	C3506	A C 1C	C3523	A C 2C	CN402	A C 2D	IC1702	A C 2B	R1601	A C 3B	R1616
C1602	A C 3D	C1617	A C 4B	C1635	A C 3A	C3507	A C 1C	C3524	A C 2C	CN403	A C 1C	IC3501	A C 2C	R1602	A C 3B	R1617
C1603	A C 3B	C1618	A C 4B	C1638	A C 3B	C3508	A C 1B	C3525	A C 2C	CN404	A C 2D	IC3502	A C 1C	R1603	A C 3B	R1618
C1605	A C 3B	C1619	A C 4B	C1639	A C 3B	C3509	A C 1C	C3526	A C 2C	CN405	A C 3D	COIL		R1604	A C 3B	R1619
C1606	A C 3B	C1620	A C 4B	C1640	A C 3B	C3510	A C 1B	C3527	A C 2C	CN406	A C 3B	L1601	A C 1B	R1605	A C 3B	R1620
C1607	A C 2B	C1621	A C 4B	C1641	A C 3B	C3511	A C 2C	C3528	A C 2C	CN407	A C 1C	L1602	A C 1B	R1606	A C 1B	R1621
C1610	A C 3B	C1622	A C 4B	C1642	A C 4B	C3512	A C 2C	C3529	A C 2C	DIODE		L3501	A C 1B	R1609	A C 3B	R1622
C1611	A C 3B	C1623	A C 4B	C1701	A C 2B	C3513	A C 2C	C3530	A C 2C	D1602	A C 1B	L3502	A C 1B	R1610	A C 3D	R1624
C1612	A C 3B	C1624	A C 4B	C1702	A C 2B	C3514	A C 1C	C3531	A C 2C	D1603	A C 1B	L3503	A C 1B	R1611	A C 3D	R1625
C1613	A C 3B	C1625	A C 4B	C3501	A C 1C	C3516	A C 1C	C3532	A C 2C	D1604	A C 1B	L3504	A C 2B	R1612	A C 4B	R1626
C1614	A C 3B	C1626	A C 3A	C3502	A C 1C	C3517	A C 2C	C3533	A C 1C	IC		L3505	A C 2B	R1613	A C 4B	R1627
C1615	A C 4B	C1627	A C 3B	C3503	A C 1C	C3519	A C 2C	CONNECTOR		IC1601	A C 3B	TRANSISTOR		R1614	A C 4B	R1628
		C1628	A C 4B	C3504	A C 1B	C3520	A C 2B	CN401	A C 2A	IC1701	A C 2B	Q1601	A C 1B			R1629
		C1632	A C 1B	C3505	A C 1C	C3522	A C 2C									

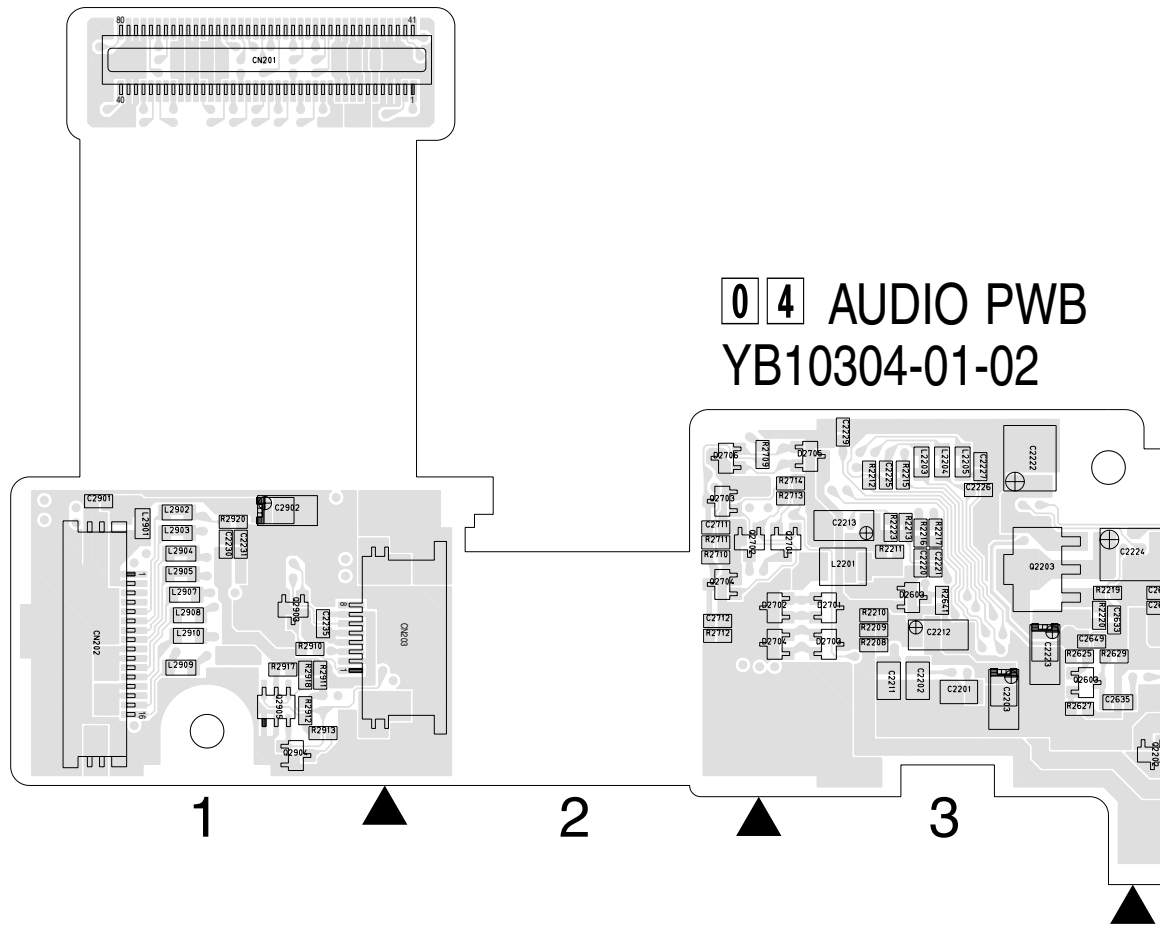
COMPONENT SIDE(A)



REF.NO.	LOCATION	REF.NO.	LOCATION	REF.NO.	LOCATION	REF.NO.	LOCATION	REF.NO.	LOCATION	REF.NO.	LOCATION	REF.NO.	LOCATION
R1615	A C 4B	R1630	A C 2B	R1644	A C 4B	R1712	A C 2B	R3511	A C 1C	TL1603	A C 2B	TL1617	A C 2B
R1616	A C 4B	R1631	A C 2B	R1645	A C 4B	R1713	A C 2B	R3512	A C 1C	TL1604	A C 2B	TL1618	A C 2B
R1617	A C 4B	R1632	A C 2B	R1646	A C 3B	R1714	A C 2B	R3513	A C 1B	TL1605	A C 1B	TL1619	A C 2B
R1618	A C 4B	R1633	A C 2B	R1701	A C 2B	R1715	A C 2B	R3514	A C 1B	TL1606	A C 2B		
R1619	A C 3A	R1634	A C 1B	R1702	A C 2B	R1703	A C 2B	R3501	A C 1C	TL1607	A C 2B		
R1620	A C 3B	R1635	A C 1B	R1703	A C 2C	R1704	A C 2B	R3502	A C 1C	TL1608	A C 4B		
R1621	A C 3B	R1636	A C 1B	R1704	A C 2B	R1705	A C 2C	R3503	A C 1C	TL1609	A C 3B		
R1622	A C 1B	R1637	A C 1B	R1705	A C 2C	R1706	A C 2B	R3504	A C 2D	TL1610	A C 3B		
R1624	A C 3B	R1638	A C 4B	R1706	A C 2B	R1707	A C 2B	R3505	A C 2D	TL1611	A C 2B		
R1625	A C 3B	R1639	A C 4B	R1707	A C 2B	R1708	A C 2B	R3506	A C 2D	TL1612	A C 2B		
R1626	A C 3B	R1640	A C 4B	R1708	A C 2B	R1709	A C 2B	R3507	A C 2D	TL1613	A C 3B		
R1627	A C 3B	R1641	A C 4B	R1709	A C 2B	R1710	A C 2B	R3508	A C 2C	TL1614	A C 4D		
R1628	A C 3D	R1642	A C 3D	R1710	A C 2B	R1711	A C 2B	R3509	A C 1C	TL1615	A C 2D		
R1629	A C 3B	R1643	A C 3B	R1711	A C 2B	R3510	A C 1C	R3510	A C 1C	TL1616	A C 2B		
								OTHER					
								PC04	A C 1D	TL1601	A C 2B		
								PC05	A C 1D	TL1602	A C 2B		
								TL1601	A C 3A				
								TL1602	A C 1B				

4.3 AUDIO CIRCUIT BOARD

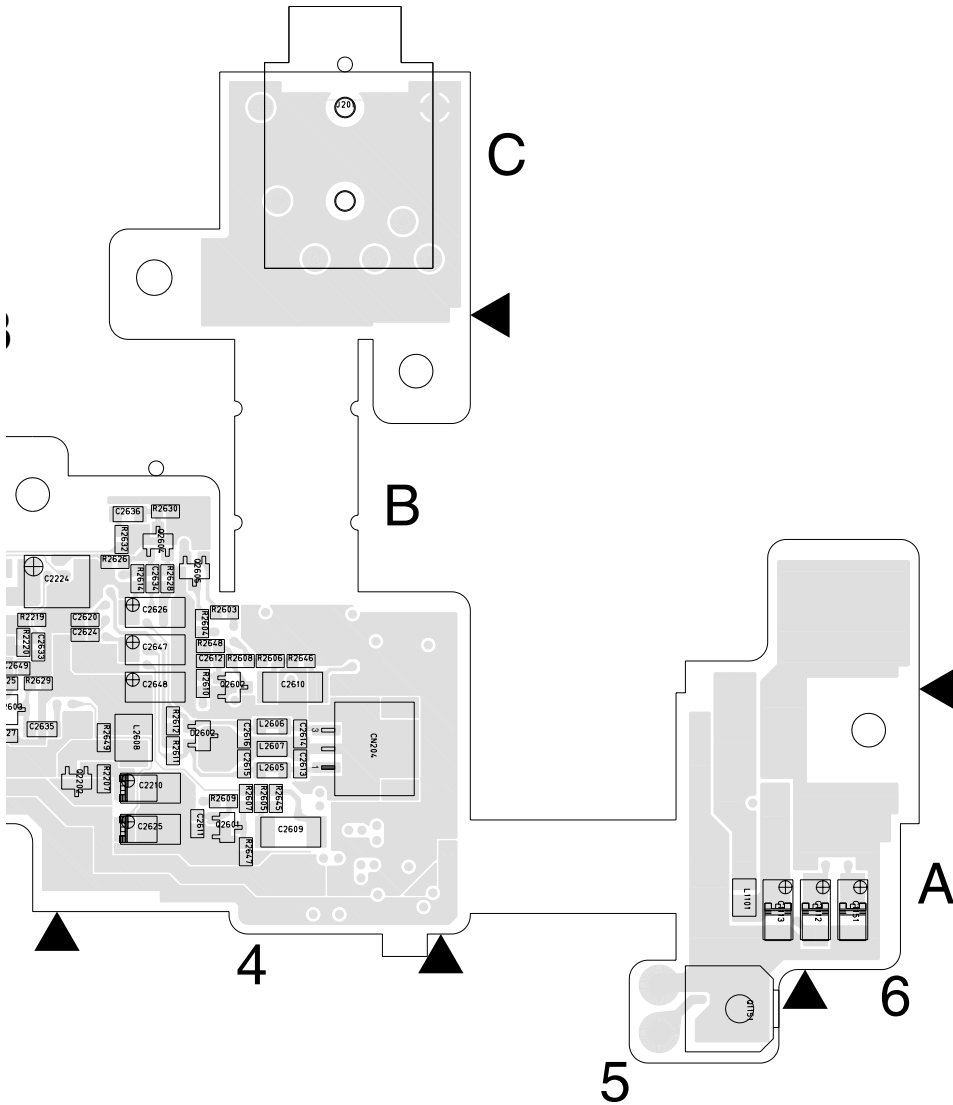
FOIL SIDE(B)



COMPONENT PARTS LOCATION GUIDE <AUDIO >

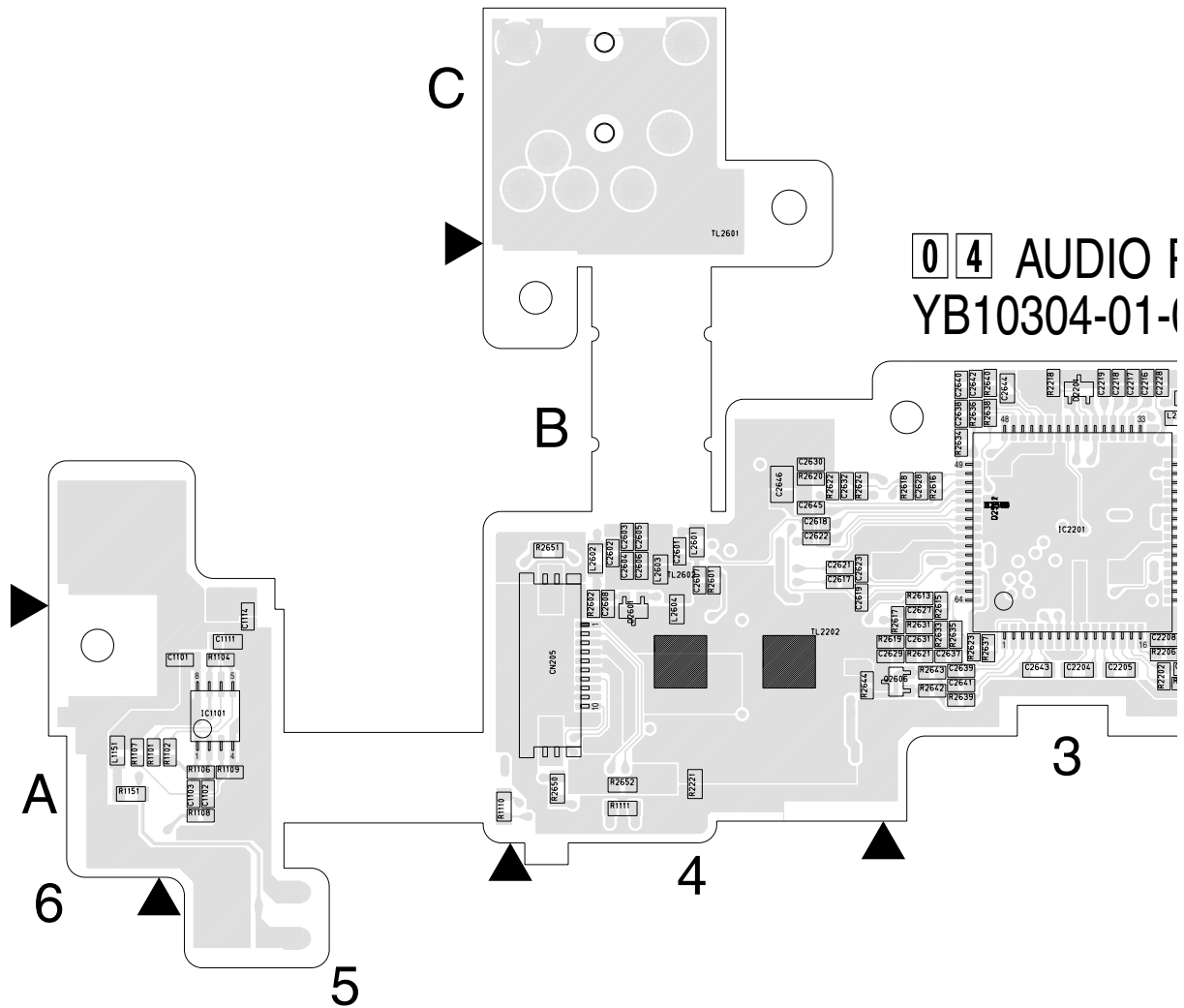
REF.NO.	LOCATION	REF.NO.	LOCATION	REF.NO.	LOCATION	REF.NO.	LOCATION	REF.NO.	LOCATION	REF.NO.	LOCATION	REF.NO.	LOCATION	REF.NO.	LOCATION	
CAPACITOR																
C1101	A C 5A	C2217	A C 3B	C2606	A C 4B	C2630	A C 4B	C2705	A C 2B	D2601	A C 4A	L2206	A C 3B	Q2203	B C 3B	
C1102	A C 5A	C2218	A C 3B	C2607	A C 4B	C2631	A C 3A	C2706	A C 2B	D2602	B C 4A	L2601	A C 4B	Q2601	B C 4A	
C1103	A C 5A	C2219	A C 3B	C2608	A C 4B	C2632	A C 4B	C2707	A C 3B	D2603	B C 3B	L2602	A C 4B	Q2602	B C 4B	
C1111	A C 5A	C2220	B C 3B	C2609	B C 4A	C2633	B C 3B	C2708	A C 3B	D2701	B C 3B	L2603	A C 4B	Q2603	B C 3A	
C1112	B C 6A	C2221	B C 3B	C2610	B C 4B	C2634	B C 4B	C2709	A C 2B	D2702	B C 3B	L2604	A C 4A	Q2604	B C 4B	
C1113	B C 5A	C2222	B C 3B	C2611	B C 4A	C2635	B C 3A	C2710	A C 3B	D2703	B C 3B	L2605	B C 4A	Q2605	B C 4B	
C1114	A C 5A	C2223	B C 3B	C2612	B C 4B	C2636	B C 4B	C2711	B C 2B	D2704	B C 3B	L2606	B C 4A	Q2606	A C 3A	
C1151	B C 6A	C2224	B C 4B	C2613	B C 4A	C2637	A C 3A	C2712	B C 2B	D2705	B C 3B	L2607	B C 4A	Q2701	B C 3B	
C2201	B C 3A	C2225	B C 3B	C2614	B C 4A	C2638	A C 3B	C2901	B C 1B	D2706	B C 2B	L2608	B C 4A	Q2702	B C 2B	
C2202	B C 3A	C2226	B C 3B	C2615	B C 4A	C2639	A C 3A	C2902	B C 1B	D2901	A C 1B	L2901	B C 1B	Q2703	B C 2B	
C2203	B C 3A	C2227	B C 3B	C2616	B C 4A	C2640	A C 3B	C2903	A C 1B	D2902	A C 1B	L2902	B C 1B	Q2704	B C 2B	
C2204	A C 3A	C2228	A C 3B	C2617	A C 4B	C2641	A C 3A	C2904	A C 1A	D2903	A C 1B	L2903	B C 1B	Q2901	A C 1B	
C2205	A C 3A	C2229	B C 3B	C2618	A C 4B	C2642	A C 3B	C2905	A C 1A	IC			L2904	B C 1B	Q2902	A C 1A
C2206	A C 3A	C2230	B C 1B	C2619	A C 4B	C2643	A C 3A	C2906	A C 1B	IC1101	A C 5A	L2905	B C 1B	Q2903	B C 1B	
C2207	A C 3A	C2231	B C 1B	C2620	B C 4B	C2644	A C 3B	C2907	A C 1B	IC2201	A C 3B	L2906	A C 1A	Q2904	B C 1A	
C2208	A C 3A	C2232	A C 1B	C2621	A C 4B	C2645	A C 4B	CONNECTOR			L2907	B C 1B	Q2905	B C 1A		
C2209	A C 3A	C2233	A C 1B	C2622	A C 4B	C2646	A C 4B	CN201	B C 2C	COIL			RESISTOR			
C2210	B C 4A	C2234	A C 1B	C2623	A C 4B	C2647	B C 4B	CN202	B C 1B	L1101	B C 5A	R1101	A C 6A			
C2211	B C 3A	C2235	B C 1B	C2624	B C 4B	C2648	B C 4B	CN203	B C 1A	L1151	A C 6A	R1102	A C 5A			
C2212	B C 3B	C2601	A C 4B	C2625	B C 4A	C2649	B C 3B	CN204	B C 4A	L2201	B C 3B	R1104	A C 5A			
C2213	B C 3B	C2602	A C 4B	C2626	B C 4B	C2701	A C 3A	CN205	A C 4A	L2202	A C 3B	R1106	A C 5A			
C2214	A C 3B	C2603	A C 4B	C2627	A C 3A	C2702	A C 3B	DIODE			L2203	B C 3B	Q1151	A D 5A	R1107	A C 6A
C2216	A C 3B	C2604	A C 4B	C2628	A C 3B	C2703	A C 3B	D2201	A C 3B	L2204	B C 3B	Q2201	A C 2A	R1108	A C 5A	
		C2605	A C 4B	C2629	A C 3A	C2704	A C 2B			L2205	B C 3B	Q2202	B C 4A	R1109	A C 5A	

B)



LOCATION	REF.NO.	LOCATION	REF.NO.	LOCATION	REF.NO.	LOCATION	REF.NO.	LOCATION	REF.NO.	LOCATION	REF.NO.	LOCATION	REF.NO.	LOCATION
B C 3B	R1110	A C 5A	R2220	B C 3B	R2621	A C 3A	R2645	B C 4A	R2903	A C 1B	TL2603	A C 1A		
B C 4A	R1111	A C 4A	R2221	A C 4A	R2622	A C 4B	R2646	B C 4B	R2904	A C 1B	TL2604	A C 1A		
B C 4B	R1112	A C 1B	R2222	A C 1B	R2623	A C 3A	R2647	B C 4A	R2905	A C 1B				
B C 3A	R1113	A C 1B	R2223	B C 3B	R2624	A C 4B	R2648	B C 4B	R2906	A C 1B				
B C 4B	R1151	A C 6A	R2601	A C 4B	R2625	B C 3B	R2649	B C 4A	R2907	A C 1A				
B C 4B	R2201	A C 3A	R2602	A C 4B	R2626	B C 4B	R2650	A C 4A	R2908	A C 1A				
A C 3A	R2202	A C 3A	R2603	B C 4B	R2627	B C 3A	R2651	A C 4B	R2909	A C 1B				
B C 3B	R2203	A C 3A	R2604	B C 4B	R2628	B C 4B	R2652	A C 4A	R2910	B C 1B				
B C 2B	R2204	A C 3A	R2605	B C 4A	R2629	B C 3B	R2701	A C 2A	R2911	B C 1A				
B C 2B	R2205	A C 2A	R2606	B C 4B	R2630	B C 4B	R2702	A C 2B	R2912	B C 1A				
B C 2B	R2206	A C 3A	R2607	B C 4A	R2631	A C 3A	R2703	A C 2A	R2913	B C 1A				
A C 1B	R2207	B C 4A	R2608	B C 4B	R2632	B C 4B	R2704	A C 2B	R2914	A C 1B				
A C 1A	R2208	B C 3B	R2609	B C 4A	R2633	A C 3A	R2705	A C 2A	R2917	B C 1A				
B C 1B	R2209	B C 3B	R2610	B C 4B	R2634	A C 3B	R2706	A C 2B	R2918	B C 1A				
B C 1A	R2210	B C 3B	R2611	B C 4A	R2635	A C 3A	R2707	A C 2B	R2919	A C 1B				
B C 1A	R2211	B C 3B	R2612	B C 4A	R2636	A C 3B	R2708	A C 2B	R2920	B C 1B				
	R2212	B C 3B	R2613	A C 3B	R2637	A C 3A	R2709	B C 3B						
	R2213	B C 3B	R2614	B C 4B	R2638	A C 3B	R2710	B C 2B						
	R2214	A C 3B	R2615	A C 3B	R2639	A C 3A	R2711	B C 2B						
A C 6A	R2215	B C 3B	R2616	A C 3B	R2640	A C 3B	R2712	B C 2B	J201	B D 4C				
A C 5A	R2216	B C 3B	R2617	A C 3A	R2641	B C 3B	R2713	B C 3B	TL2201	A C 2B				
A C 5A	R2217	B C 3B	R2618	A C 3B	R2642	A C 3A	R2714	B C 3B	TL2202	A C 4A				
A C 6A	R2218	A C 3B	R2619	A C 3A	R2643	A C 3A	R2715	B C 3B	TL2203	A C 1A				
A C 5A	R2219	B C 3B	R2620	A C 3A	R2644	A C 3A	R2716	A C 1B	TL2204	A C 2A				
A C 5A				A C 4B		A C 4A	R2902	A C 1B	TL2601	A C 4C				
									TL2602	A C 4B				

COMPONENT SIDE(



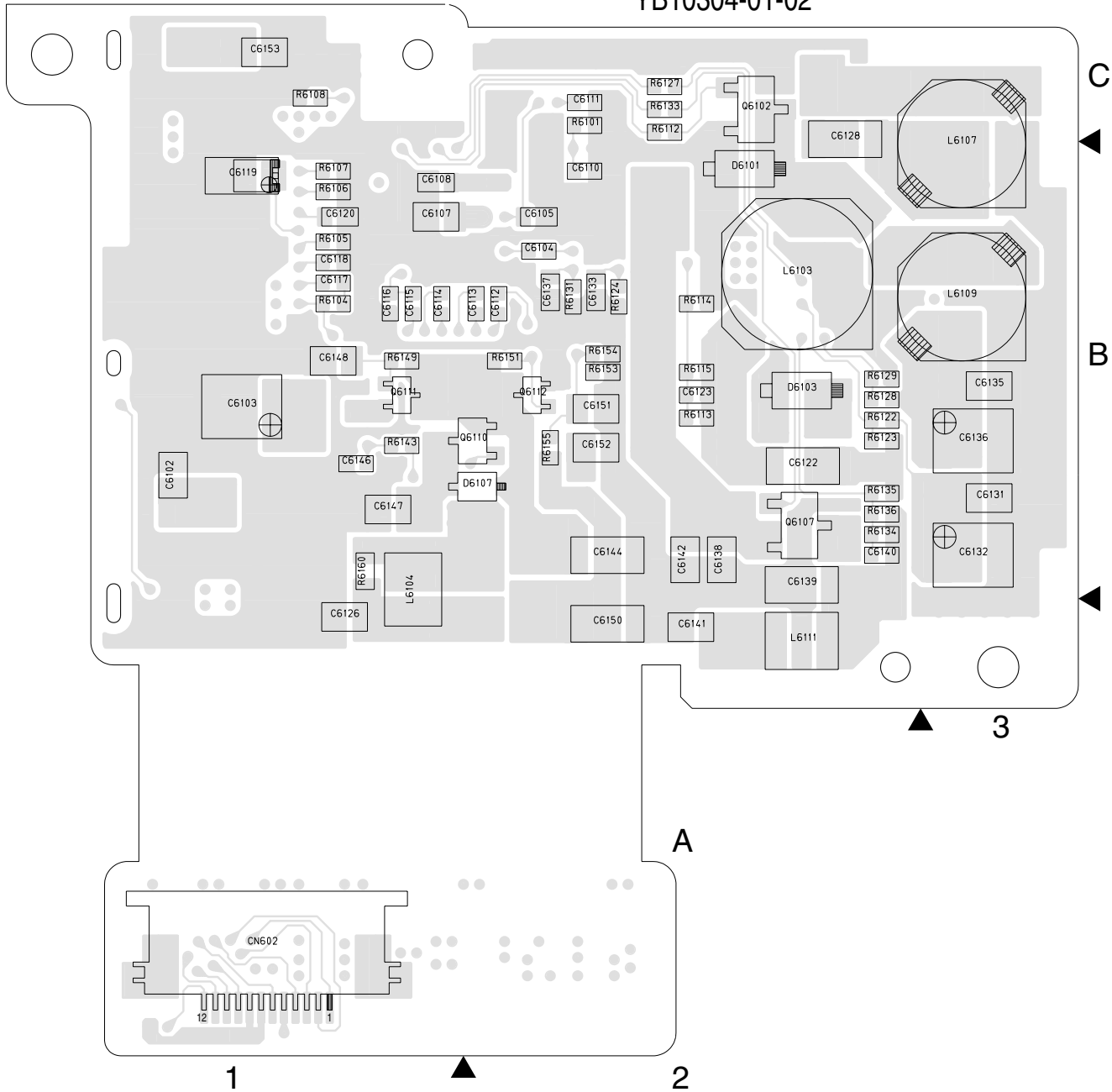
COMPONENT PARTS LOCATION GUIDE <AUDIO >

REF.NO.	LOCATION	REF.NO.	LOCATION	REF.NO.	LOCATION	REF.NO.	LOCATION	REF.NO.	LOCATION	REF.NO.	LOCATION	REF.NO.	LOCATION	REF.NO.	LOCATION	
CAPACITOR																
C1101	A C 5A	C2217	A C 3B	C2606	A C 4B	C2630	A C 4B	C2705	A C 2B	D2601	A C 4A	L2206	A C 3B	Q2203	B C 3B	
C1102	A C 5A	C2218	A C 3B	C2607	A C 4B	C2631	A C 3A	C2706	A C 2B	D2602	B C 4A	L2601	A C 4B	Q2601	B C 4A	
C1103	A C 5A	C2219	A C 3B	C2608	A C 4B	C2632	A C 4B	C2707	A C 3B	D2603	B C 3B	L2602	A C 4B	Q2602	B C 4B	
C1111	A C 5A	C2220	B C 3B	C2609	B C 4A	C2633	B C 3B	C2708	A C 3B	D2701	B C 3B	L2603	A C 4B	Q2603	B C 3A	
C1112	B C 6A	C2221	B C 3B	C2610	B C 4B	C2634	B C 4B	C2709	A C 2B	D2702	B C 3B	L2604	A C 4A	Q2604	B C 4B	
C1113	B C 5A	C2222	B C 3B	C2611	B C 4A	C2635	B C 3A	C2710	A C 3B	D2703	B C 3B	L2605	B C 4A	Q2605	B C 4B	
C1114	A C 5A	C2223	B C 3B	C2612	B C 4B	C2636	B C 4B	C2711	B C 2B	D2704	B C 3B	L2606	B C 4A	Q2606	A C 3A	
C1151	B C 6A	C2224	B C 4B	C2613	B C 4A	C2637	A C 3A	C2712	B C 2B	D2705	B C 3B	L2607	B C 4A	Q2701	B C 3B	
C2201	B C 3A	C2225	B C 3B	C2614	B C 4A	C2638	A C 3B	C2901	B C 1B	D2706	B C 2B	L2608	B C 4A	Q2702	B C 2B	
C2202	B C 3A	C2226	B C 3B	C2615	B C 4A	C2639	A C 3A	C2902	B C 1B	D2901	A C 1B	L2901	B C 1B	Q2703	B C 2B	
C2203	B C 3A	C2227	B C 3B	C2616	B C 4A	C2640	A C 3B	C2903	A C 1B	D2902	A C 1B	L2902	B C 1B	Q2704	B C 2B	
C2204	A C 3A	C2228	A C 3B	C2617	A C 4B	C2641	A C 3A	C2904	A C 1A	D2903	A C 1B	L2903	B C 1B	Q2901	A C 1B	
C2205	A C 3A	C2229	B C 3B	C2618	A C 4B	C2642	A C 3B	C2905	A C 1A	IC			L2904	B C 1B	Q2902	A C 1A
C2206	A C 3A	C2230	B C 1B	C2619	A C 4B	C2643	A C 3A	C2906	A C 1B	IC1101			L2905	B C 1B	Q2903	B C 1B
C2207	A C 3A	C2231	B C 1B	C2620	B C 4B	C2644	A C 3B	C2907	A C 1B	IC2201			L2906	A C 1A	Q2904	B C 1A
C2208	A C 3A	C2232	A C 1B	C2621	A C 4B	C2645	A C 4B	CONNECTOR			L2907	B C 1B	Q2905	B C 1A		
C2209	A C 3A	C2233	A C 1B	C2622	A C 4B	C2646	A C 4B	CN201	B C 2C	COIL			L2908	B C 1B	RESISTOR	
C2210	B C 4A	C2234	A C 1B	C2623	A C 4B	C2647	B C 4B	CN202	B C 1B	L1101	B C 5A	L2909	B C 1A	R1101	A C 6A	
C2211	B C 3A	C2235	B C 1B	C2624	B C 4B	C2648	B C 4B	CN203	B C 1A	L1151	A C 6A	L2910	B C 1B	R1102	A C 5A	
C2212	B C 3B	C2601	A C 4B	C2625	B C 4A	C2649	B C 3B	CN204	B C 4A	L2201	B C 3B	L2911	A C 1A	R1104	A C 5A	
C2213	B C 3B	C2602	A C 4B	C2626	B C 4B	C2701	A C 3A	CN205	A C 4A	L2202	A C 3B	TRANSISTOR			R1106	A C 5A
C2214	A C 3B	C2603	A C 4B	C2627	A C 3A	C2702	A C 3B	DIODE			L2203	B C 3B	Q1151	A D 5A	R1107	A C 6A
C2216	A C 3B	C2604	A C 4B	C2628	A C 3A	C2703	A C 3B	D2201	A C 3B	L2204	B C 3B	Q2201	A C 2A	R1108	A C 5A	
		C2605	A C 4B	C2629	A C 3B	C2704	A C 2B			L2205	B C 3B	Q2202	B C 4A	R1109	A C 5A	

4.4 REG CIRCUIT BOARD

FOIL SIDE(B)

05 REG PWB
YB10304-01-02

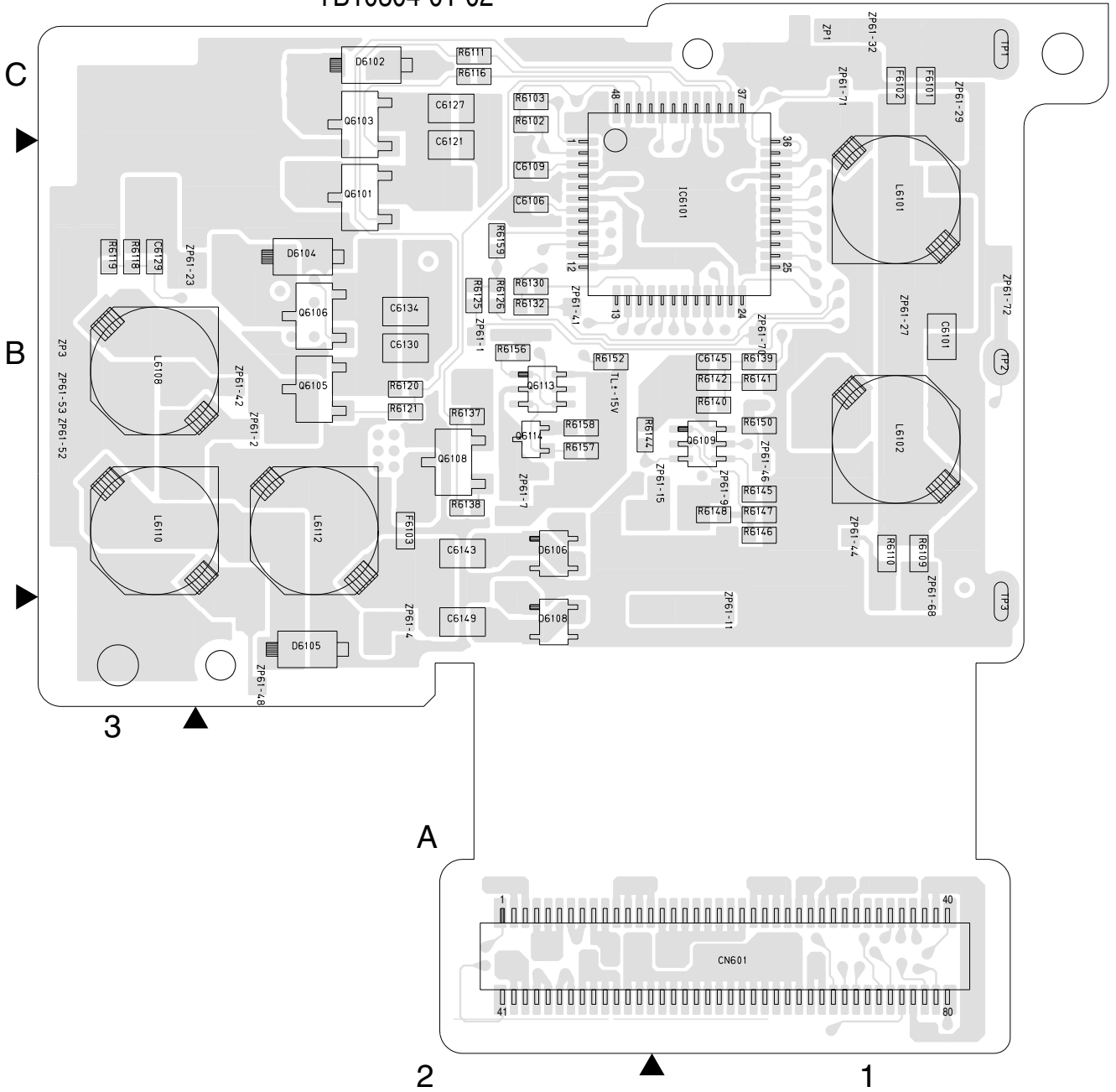


COMPONENT PARTS LOCATION GUIDE <REG >

REF.NO.	LOCATION	REF.NO.	LOCATION	REF.NO.	LOCATION	REF.NO.	LOCATION	REF.NO.	LOCATION	REF.NO.	LOCATION	REF.NO.	LOCATION	REF.NO.	LOCATION		
CAPACITOR																	
C2205	A C 4A	C2233	A C 4B	C2905	A C 4C	C6117	B C 1B	C6138	B C 2B	CN203	B C 4B	D6106	A C 2B	L2905	B C 4B		
C2206	A C 4A	C2234	A C 4B	C2906	A C 4B	C6118	B C 1B	C6139	B C 2B	CN601	A C 2A	D6107	B C 2B	L2906	A C 4C		
C2207	A C 4A	C2235	B C 4B	C2907	A C 4B	C6119	B C 1B	C6140	B C 2B	CN602	B C 1A	D6108	A C 2A	L2907	B C 4B		
C2208	A C 4A	C2701	A C 4A	C6101	A C 1B	C6120	B C 1B	C6141	B C 2A	DIODE						L2908	B C 4B
C2209	A C 4A	C2702	A C 4A	C6102	B C 1B	C6121	A C 2B	C6142	B C 2B							D2701	B C 4A
C2210	A C 4A	C2703	A C 4A	C6103	B C 1B	C6122	B C 2B	C6143	A C 2B	D2702	B C 4A	F6102	A C 1C	L2910	B C 4B		
C2211	B C 4A	C2704	A C 4A	C6104	B C 2B	C6123	B C 2B	C6144	B C 2B	D2703	B C 4A	F6103	A C 2B	L2911	A C 4C		
C2212	B C 4A	C2705	A C 4A	C6105	B C 2B	C6126	B C 1A	C6145	A C 1B	D2704	B C 4A	IC				L6101	A C 1B
C2213	A C 4A	C2706	A C 4A	C6106	A C 2B	C6127	A C 2C	C6146	B C 1B	D2705	B C 4A					L6102	A C 1B
C2214	A C 4A	C2707	A C 4A	C6107	B C 1B	C6128	A C 2C	C6147	B C 1B	D2706	B C 4A	IC6101	A C 1B	L6103	B C 2B		
C2216	A C 5A	C2708	A C 4A	C6108	B C 1B	C6129	A C 3B	C6148	B C 1B	D2901	A C 4B	COIL				L6104	B C 2B
C2217	A C 5A	C2709	A C 4A	C6109	A C 2B	C6130	A C 2B	C6149	A C 2A	D2902	A C 4B					L2201	B C 4A
C2218	A C 4A	C2710	A C 4A	C6110	A C 2B	C6131	A C 3B	C6150	B C 2A	D2903	A C 4B	L2202	A C 4A	L6108	A C 3B		
C2225	B C 4A	C2711	B C 4A	C6111	B C 2C	C6132	B C 3B	C6151	B C 2B	D6101	B C 4B	L2206	A C 4A	L6109	A C 3B		
C2228	A C 5A	C2712	B C 4A	C6112	B C 2B	C6133	B C 2B	C6152	B C 2B	D6102	A C 2C	L2901	B C 4C	L6110	A C 3B		
C2229	B C 5A	C2901	B C 4C	C6113	B C 2B	C6134	A C 2B	C6153	B C 1C	D6103	B C 2B	L2902	B C 4C	L6111	A C 3B		
C2230	B C 4B	C2902	B C 4C	C6114	B C 1B	C6135	B C 3B	CONNECTOR				L2903	B C 4B	L6112	A C 2A		
C2231	B C 4B	C2903	A C 4B	C6115	B C 1B	C6136	B C 3B					CN202	B C 4C	D6104	A C 2B	L2904	B C 4B
C2232	A C 4B	C2904	A C 4C	C6116	B C 1B	C6137	B C 2B	D6105	A C 2A	D6105	A C 2A			Q6102	B A 2B		
														Q6103	A A 2B		
														Q6104	A A 2B		
														Q6105	A A 2B		
														Q6106	A A 2B		
														Q6107	A A 2B		
														Q6108	A A 2B		

COMPONENT SIDE(A)

05 REG PWB
YB10304-01-02



LOCATION	REF.NO.	LOCATION	REF.NO.	LOCATION	REF.NO.	LOCATION	REF.NO.	LOCATION	REF.NO.	LOCATION	REF.NO.	LOCATION	REF.NO.	LOCATION	REF.NO.	LOCATION	REF.NO.
TRANSISTOR																	
	Q6109	A C 1B	R2211	B C 4A	R2901	A C 4C	R6102	A C 2C	R6122	B C 2B	R6141	A C 1B	R6160	B C 1B	ZP61-7	A C 2B	
A	Q6110	B C 2B	R2212	B C 4A	R2902	A C 4C	R6103	A C 2C	R6123	B C 2B	R6142	A C 1B			ZP61-9	A C 1B	
B	Q6111	B C 1B	R2214	A C 4A	R2903	A C 4B	R6104	B C 1B	R6124	B C 2B	R6143	B C 1B	TESTPOINT				
C	Q6112	B C 2B	R2222	A C 4B	R2904	A C 4C	R6105	B C 1B	R6125	A C 2B	R6144	A C 2B	TP1	A C 1C	ZP61-15	A C 3B	
B	Q6113	A C 2B	R2223	B C 4A	R2905	A C 4C	R6106	B C 1B	R6126	A C 2B	R6145	A C 1B	TP2	A C 1B	ZP61-23	A C 3B	
B	Q6114	A C 2B	R2701	A C 4A	R2906	A C 4C	R6107	B C 1B	R6127	B C 2B	R6146	A C 1B	TP3	A C 1A	ZP61-27	A C 1B	
A	RESISTOR			R2702	A C 4A	R2907	A C 4C	R6108	B C 1C	R6128	A C 2B	R6147	A C 1B	OTHER			
A	R1112	A C 4C	R2703	A C 4A	R2908	A C 4C	R6109	A C 1B	R6129	B C 2B	R6148	A C 1B	J201	A D 5A	ZP61-29	A C 1C	
B	R1113	A C 4C	R2704	A C 4A	R2909	A C 4B	R6110	A C 1B	R6130	A C 2B	R6149	B C 1B	TL2201	A C 4B	ZP61-41	A C 2B	
B	R2201	A C 4A	R2705	A C 4A	R2910	B C 4B	R6111	A C 2C	R6131	B C 2B	R6150	A C 1B	TL2202	A C 4B	ZP61-42	A C 2B	
B	R2202	A C 4A	R2706	A C 4A	R2911	B C 4B	R6112	B C 2C	R6132	A C 2B	R6151	B C 2B	TL2204	A C 4B	ZP61-44	A C 1B	
A	R2203	A C 4A	R2707	A C 4A	R2912	B C 4B	R6113	B C 2B	R6133	B C 2C	R6152	A C 2B	TL2603	A C 4B	ZP61-46	A C 1B	
B	R2204	A C 4A	R2708	A C 4A	R2913	B C 4B	R6114	B C 2B	R6134	B C 2B	R6153	B C 2B	TL2604	A C 4B	ZP61-48	A C 2A	
A	R2205	A C 4A	R2709	B C 4A	R2914	A C 4B	R6115	B C 2B	R6135	B C 2B	R6154	B C 2B	TL-15V	A C 2B	ZP61-52	A C 3B	
A	R2206	A C 4A	R2710	B C 4A	R2917	B C 4B	R6116	A C 2C	R6136	B C 2B	R6155	B C 2B	ZP1	A C 1C	ZP61-53	A C 3B	
A	R2208	B C 4A	R2711	B C 4A	R2918	B C 4B	R6118	A C 3B	R6137	A C 2B	R6156	A C 2B	ZP3	A C 3B	ZP61-60	A C 1B	
B	R2209	B C 4A	R2712	B C 4A	R2919	A C 4B	R6119	A C 3B	R6138	A C 2B	R6157	A C 2B	ZP61-1	A C 2B	ZP61-67	A C 1B	
B	R2210	B C 4A	R2713	B C 4A	R2920	B C 4B	R6120	A C 2B	R6139	A C 1B	R6158	A C 2B	ZP61-2	A C 2B	ZP61-71	A C 1C	
A			R2714	B C 4A	R6101	B C 2C	R6121	A C 2B	R6140	A C 1B	R6159	A C 2B	ZP61-4	A C 2A	ZP61-72	A C 1B	